



**For further details please contact us: -**

9 Distribution Avenue, Molendinar QLD 4214  
P.O. Box 988, Nerang QLD 4211  
P: 07 56791920 F: 07 56791075  
[www.scottfreeaust.com.au](http://www.scottfreeaust.com.au)

# About Alpha Motors Pty Ltd

ALPHA tubular motors offer reliable, intuitive motorisation solutions with a highly competitive edge.

Our focus is providing the market with a genuinely high quality motorisation product that can boast the sort of build quality and reliability that until now has only been available through certain European industry giants.

But that's not enough, we needed to be better, so we introduced what is clearly the best made, most attractive and most versatile range of remote controls on the market.

On top of that, in order to provide the best value and confidence for our customers, we offer a 7 year replacement warranty, that's 2 years longer than anyone else on the market.

Then as a final triumph, we charge our customers a price that makes it possible to actively promote motorisation, instead of being embarrassed to tell someone how much it costs. This is a theme we hear from our customers time and time again.

So how did we achieve this? Simple, with no apologies whatsoever, we went to China to manufacture our product. You see we didn't adopt the normal approach when we started talking to manufacturers in China. Most companies who are looking to import motors are looking for either a cheap motor to supply with product they make directly to customers, or they are looking for a cheap motor to supplement a wider range of products such as fabrics and tubing. We took the opposite approach, we went over and hunted for the best manufacturer in the country and started discussions about producing a very high quality, complete range of Motorisation products and controllers.

Two and a half years later, thousands of motors beta tested, and with full compliance and C-Tick attained, we released Alpha Tubular Motors for sale to the market in Australia in early 2012. Since then, we have fine-tuned our range of products and are driven by our customers demand. Unlike most importers of "cheap" motors, we are able to control the quality of our product and can respond quickly to the needs of our customers.

Since our launch, hundreds of companies have adopted Alpha, as either a direct replacement of their existing motor range, or to sit side by side with the European giants. We are currently trading with many of the largest manufacturers and wholesalers in the country and are still growing at an extraordinary rate.

Although Alpha is strictly a wholesale motorisation company, our staff have additional expertise in a number of areas including the production and installation of blinds and high level Building Management / Home Automation systems, so we can usually help our customers through the difficult issues they don't come across every day. A friendly staff member with a solution is just a phone call away.

As if all of this wasn't enough to compel you to try us, we endeavour to keep between 7,000 – 10,000 motors in stock at any given time and constantly monitor these numbers to keep up with ever growing demand. Our R & D department is also always working towards developing new products and improving the ones we have.

Call us today to talk about how ALPHA tubular motors can transform your business.







# CONTENTS

## Tubular Motors

WSER Remote Control Motors .....	p 5-7
DC Motors & Batteries .....	p 8-9
WSEC Automation System Motors .....	p 10-12
WSS Mechanical Limits Motors .....	p 13-15
WSME Mechanical Limits Motors .....	p 15
WSCME Curtain Motors .....	p 16

## Control Systems

Curtain Accessories .....	p 17-18
Remote Controls .....	p 19-21
Mechanical Wall Switch .....	p 21
Receivers .....	p 22
Relay Controlled Remote .....	p 23
Motion Sensor .....	p 24





## Sun and Wind Sensors

Sun and Wind Sensors ..... p 25

## Accessories

Crown and Drive Adapters ..... p 27-31

Brackets ..... p 32

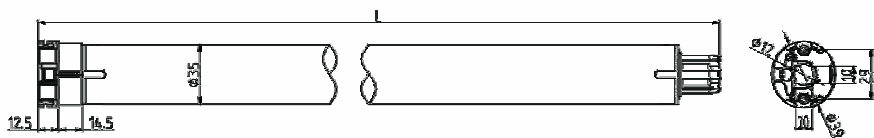
Limit Setting Device ..... p 32

Motor Selection Guide ..... p 33-45



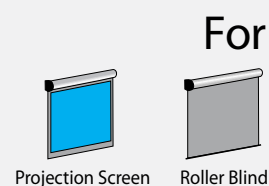
## Electronic Limit Switch

Built in Receiver Motor  
35mm diameter



Specifications - 240V / 50Hz

Type	5/28	10/14
Rated Torque (N.m)	5	10
Output Speed (rpm)	28	14
Nominal Consumption (W)	116	116
Nominal Voltage (V)	240	240
Nominal Current (A)	0.49	0.49
Running Time (Min)	4	4
Protection Index (IP)	44	44
Total Length (mm)	560	560
Maximum Turns (Turn)	∞	∞
Net Weight (Kg)	1.34	1.35



Product Certificates





# WSER50 universal

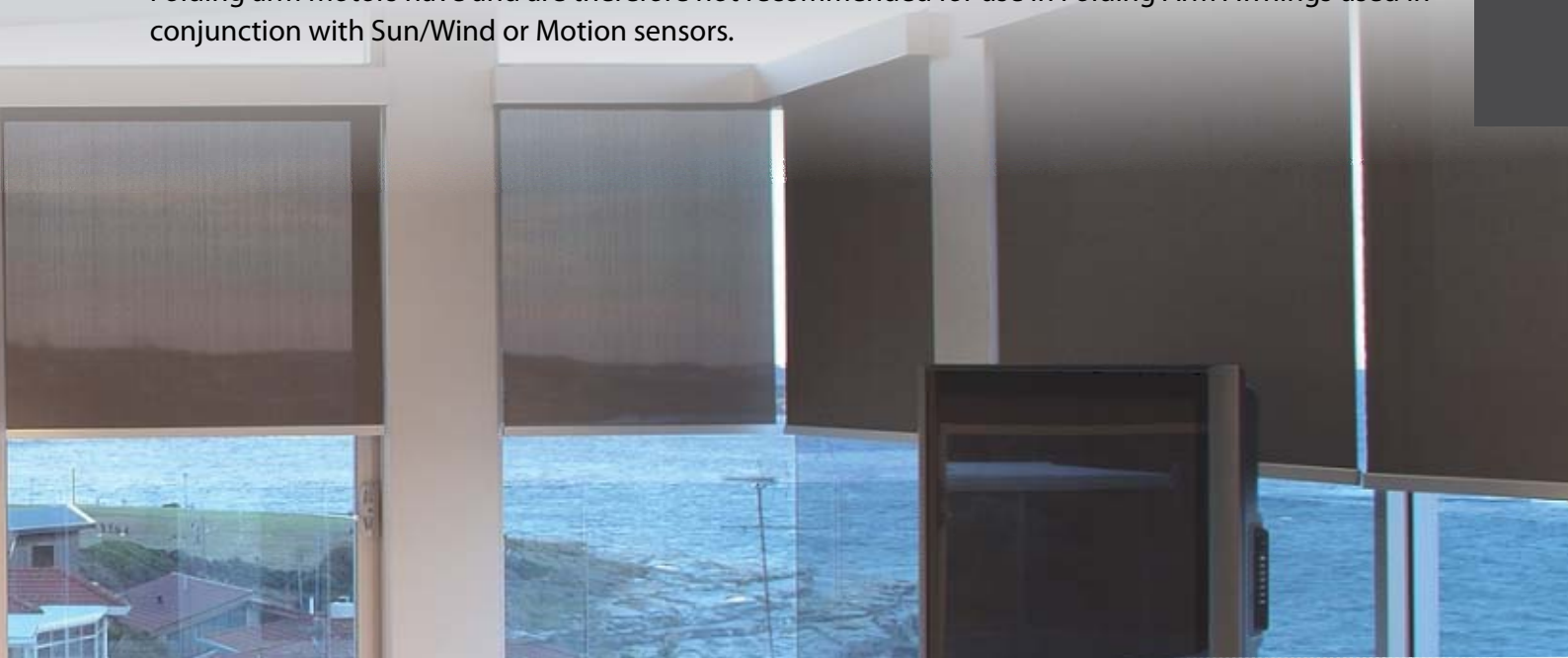
7 year replacement warranty  
Electronic limit switch  
Built-in receiver  
Wireless limit setting  
External antenna

P 6

TUBULAR MOTORS

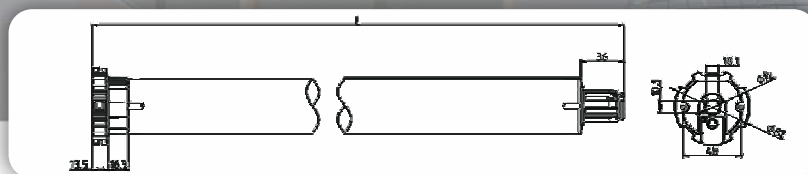
This motor is recommended for all external straight drop awning products and is also suitable for locking in and tensioning products like Café Blinds if desired.

Although controllable from Sun/Wind sensors, they do not have the same protective measures that the Folding arm motors have and are therefore not recommended for use in Folding Arm Awnings used in conjunction with Sun/Wind or Motion sensors.



## Electronic Limit Switch

Built in Receiver Motor  
45mm diameter

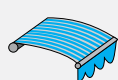


### Specifications - 240V / 50Hz

Type	10/27	30/17	50/13
Rated Torque (N.m)	10	30	50
Output Speed (rpm)	27	17	13
Nominal Consumption (W)	203	226	244
Nominal Voltage (V)	240	240	240
Nominal Current (A)	0.84	0.95	1.06
Running Time (Min)	4	4	4
Protection Index (IP)	44	44	44
Total Length (mm)	570	570	600
Maximum Turns (Turn)	∞	∞	∞
Net Weight (Kg)	2.30	2.45	2.65



For



Awning



Roller Blind



Roller Shutter



### Product Certificates



# WSER50

## folding arm motor

P 7

Also referred to as "Cassette Awning" motors, these motors are designed to automatically set their inner limit based on tension.

The outer limit is set manually using the remote and it will find its own inner stopping position by detecting the resistance as it reaches the fully closed position the first time it is closed. After this the motor will stop in this position after detecting an increased resistance of 25% while moving.

On larger cassette awnings, 25% is sometimes not enough so you can increase this to 50%, 75% or 100% if required. It's rare to need this adjustment but it's a good feature to have. This motor will also allow you to set the inner limit manually if you require. You just need to set the inner limit first.

When used with Sun/Wind sensors or Motion sensors, this motor detects a pulse from the sensor issued every 20 minutes. If the Awning is out and does not receive a signal from the sensor for half an hour, it will close itself automatically as a protective measure assuming the sensor has failed or the batteries are flat.

This safety feature is the main reason you should always choose this motor for Folding Arm Awnings if a sensor is going to be used.

## Electronic Limit Switch

Built in Receiver Motor  
45mm diameter

### Specifications - 240V / 50Hz

Type	30/17	50/13
Rated Torque (N.m)	30	50
Output Speed (rpm)	17	13
Nominal Consumption (W)	226	244
Nominal Voltage (V)	240	240
Nominal Current (A)	0.95	1.06
Running Time (Min)	4	4
Protection Index (IP)	44	44
Total Length (mm)	570	600
Maximum Turns (Turn)	∞	∞
Net Weight (Kg)	2.45	2.65

For



Awning



### Product Certificates



# WSERD30

DC 12V power supply  
electronic limit switch  
built-in receiver

P 8

## battery operated motors

**\*Use Pioneer Series Remotes  
to ensure good reception  
distance with DC motors**

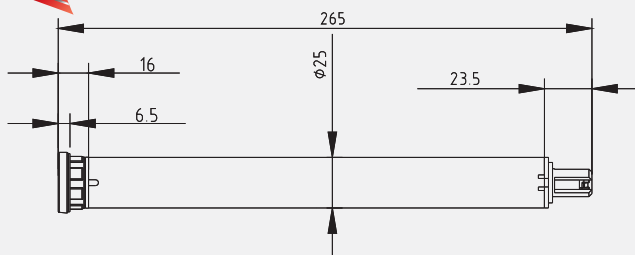
TUBULAR MOTORS



For



Roller Blind



- 3rd intermediate limit position.
  - Low power consumption.
  - Soft start and soft stop.
  - Wire has no specific poles.
- Each could connect to any 12V DC power supply.
- No thermal protection limit.
- The motor can run continuously.

### Specifications - 12V DC

Type	1/21
Rated Torque (N.m)	1.2
Output Speed (rpm)	21
Nominal Consumption (W)	9
Nominal Voltage (V)	12
Nominal Current (A)	0.74
Running Time (Min)	∞
Protection Index (IP)	44
Total Length (mm)	265
Maximum Turns (Turn)	∞
Net Weight (Kg)	0.2

**\*Use Pioneer Series Remotes  
to ensure good reception  
distance with DC motors**

# WSERD50

## battery operated motors



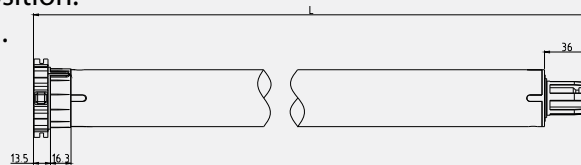
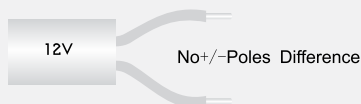
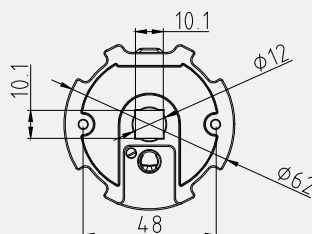
For



Roller Blind



Roller Shutter



- 3rd intermediate limit position.
- Low power consumption.
- Soft start and soft stop.

### Specifications - 12V DC

Type	15/12
Rated Torque (N.m)	15
Output Speed (rpm)	12
Nominal Consumption (W)	8
Nominal Voltage (V)	12
Nominal Current (A)	8
Maximum Power (W)	96
Protection Index (IP)	44
Total Length (mm)	565
Maximum Turns (Turn)	∞
Net Weight (Kg)	2.6

Product Certificates





# WSERD30

## motor accessories

DC 12V power supply  
electronic limit switch  
built-in receiver

P 9



### DCB004

- Output voltage 12V
- Requires 8 AA alkaline batteries (not supplied)
- Works with WSERD30 motors up to 300 up/down cycles depending on blind size
- Dimension: 18mm x 420mm
- Not rechargeable

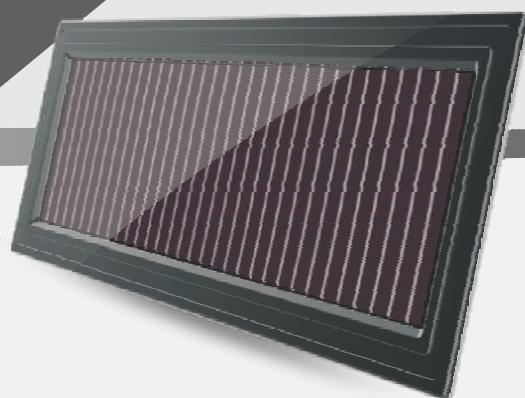
# WSERD50

## motor accessories



### DCB002

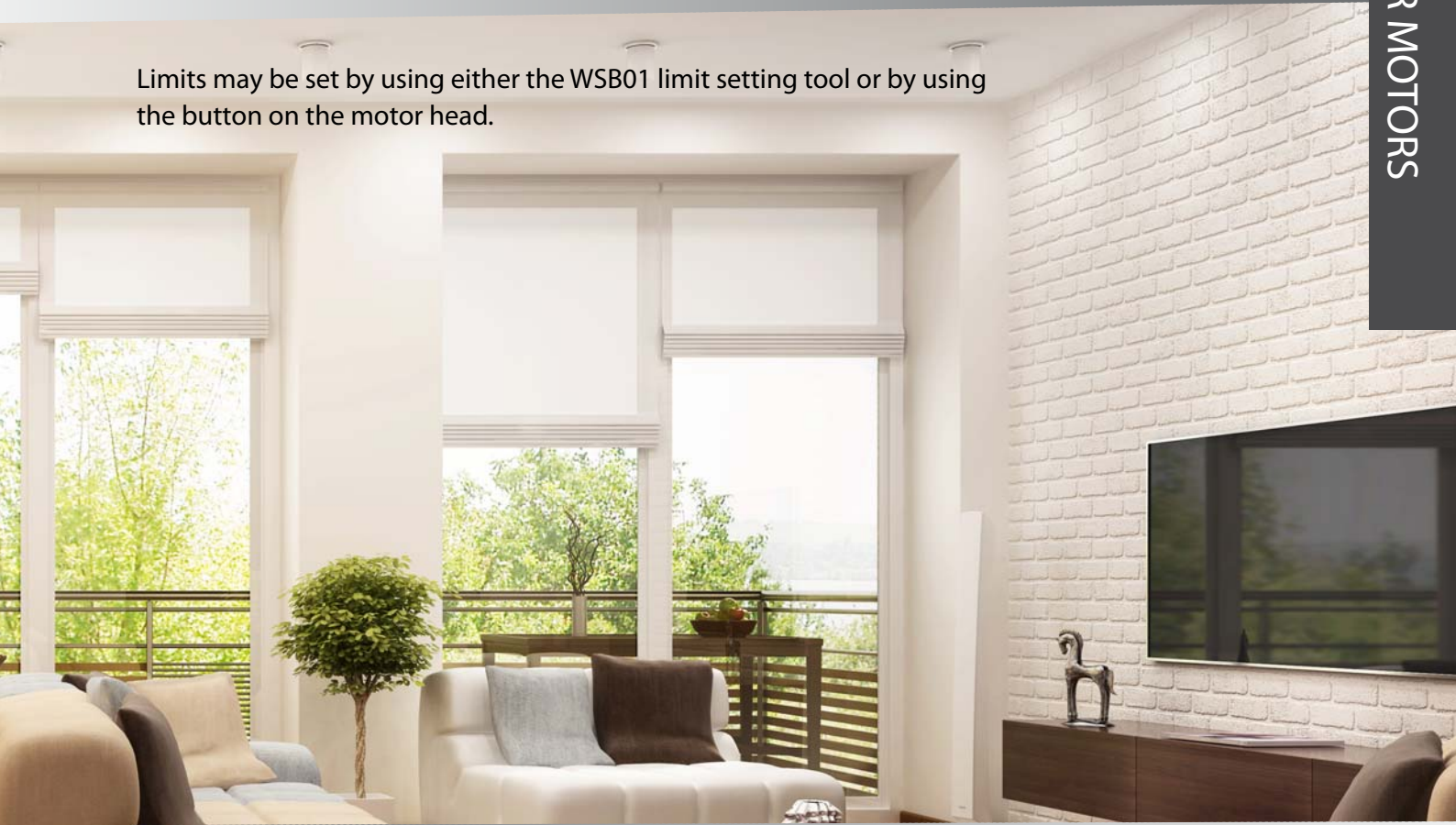
- 4.4 AH 12V rechargeable lithium battery pack
- With waterproof plug
- Output voltage 12V
- Nominal capacity 4400mAh
- Full charge by power adaptor in 6hrs
- Full charge by solar panel in 80 hours of full sun
- Up to 100 uses from a full charge
- Working temperature -10°-60°C
- Protection Index: IP55
- Dimension 28mm x 510mm



### TYB001

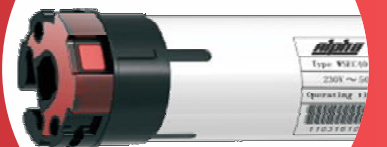
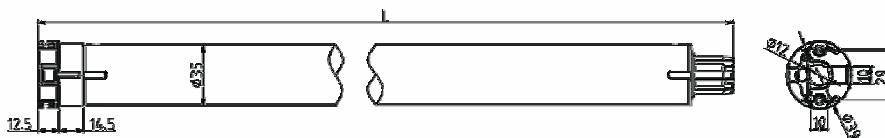
- Ultra thin design
- Nominal voltage 16.8V
- Nominal current 71mA
- Working temp -20°-80°C
- Protection index IP55
- Dimension 318x111x10mm
- Working temp -10°-60°C
- Mounting brackets supplied

Limits may be set by using either the WSB01 limit setting tool or by using the button on the motor head.



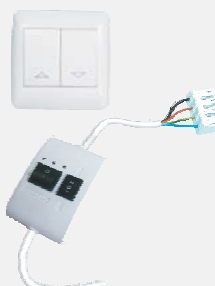
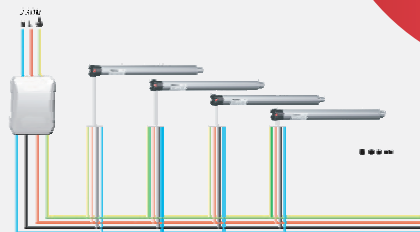
## Push Button Type

Electronic Limit Switch Parallel Connector Motor  
35mm diameter

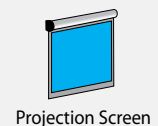


### Specifications - 240V / 50Hz

Type	5/28
Rated Torque (N.m)	5
Output Speed (rpm)	28
Nominal Consumption (W)	116
Nominal Voltage (V)	240
Nominal Current (A)	0.49
Running Time (Min)	4
Protection Index (IP)	44
Total Length (mm)	560
Maximum Turns (Turn)	∞
Net Weight (Kg)	1.35



For



Product Certificates





# WSEC50 universal

7 year replacement warranty  
Electronic limit switch  
For use with building management systems  
Parallel wiring compatible  
Counter balanced noise suppression

P 11

**\* BEST CHOICE FOR  
AUTOMATION SYSTEM**

This motor is recommended for all external straight drop awning products and is also suitable for locking in and tensioning products like café Blinds if desired.

Limits may be set by using either the WSB01 limit setting tool or by using the button on the motor head.

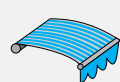
These motors cannot be protected or controlled by Sun/Wind or Motion sensors. Any protective features must be provided by the control system operating the motors.



## Push Button Type Electronic Limit Switch Parallel Connector Motor 45mm diameter



For



Awning



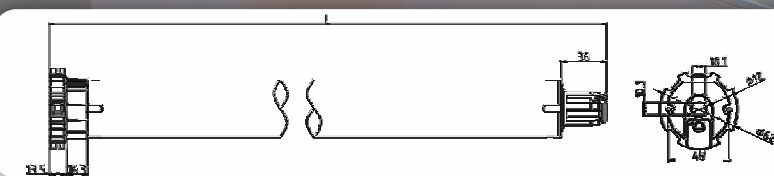
Roller Blind



Roller Shutter



### Product Certificates



### Specifications - 240V / 50Hz

Type	10/27	30/17	50/13
Rated Torque (N.m)	10	30	50
Output Speed (rpm)	27	17	13
Nominal Consumption (W)	203	226	244
Nominal Voltage (V)	240	240	240
Nominal Current (A)	0.84	0.95	1.06
Running Time (Min)	4	4	4
Protection Index (IP)	44	44	44
Total Length (mm)	570	570	600
Maximum Turns (Turn)	∞	∞	∞
Net Weight (Kg)	2.05	2.20	2.30



# WSEC50

## folding arm motor

7 year replacement warranty  
Electronic limit switch  
For use with building management systems  
Parallel wiring compatible  
Counter balanced noise suppression

P 12

**\* BEST CHOICE FOR  
AUTOMATION SYSTEM**

TUBULAR MOTORS

Also referred to as "Cassette Awning" motors, these motors are designed to automatically set their inner limit based on tension.

The outer limit is set manually using the WSB01 limit setting tool and it will find its own inner stopping position by detecting the resistance as it reaches the fully closed position the first time it is closed. After this the motor will stop in this position after detecting an increased resistance of 25% while moving.

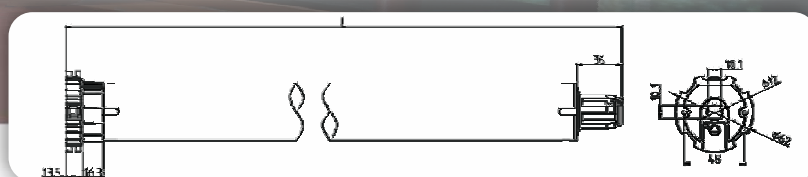
These motors cannot be protected or controlled by Sun/Wind or Motion sensors. Any protective features must be provided by the control system operating the motors.



## Push Button Type

### Electronic Limit Switch Parallel Connector Motor

### 45mm diameter



### Specifications - 240V / 50Hz

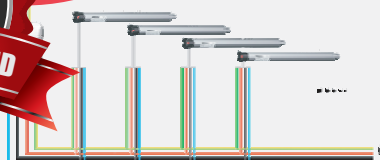
Type	30/17	50/13
Rated Torque (N.m)	30	50
Output Speed (rpm)	17	13
Nominal Consumption (W)	226	244
Nominal Voltage (V)	240	240
Nominal Current (A)	0.95	1.06
Running Time (Min)	4	4
Protection Index (IP)	44	44
Total Length (mm)	570	600
Maximum Turns (Turn)	∞	∞
Net Weight (Kg)	2.20	2.30



For



Awning



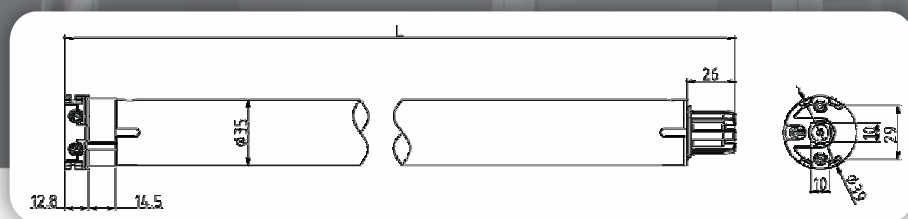
### Product Certificates





## Standard Type Motor

35mm diameter



### Specifications - 240V / 50Hz

Type	5/28
Rated Torque (N.m)	5
Output Speed (rpm)	28
Nominal Consumption (W)	116
Nominal Voltage (V)	240
Nominal Current (A)	0.49
Running Time (Min)	4
Protection Index (IP)	44
Total Length (mm)	480
Maximum Turns (Turn)	40
Net Weight (Kg)	1.34



For



Projection Screen



Roller Blind

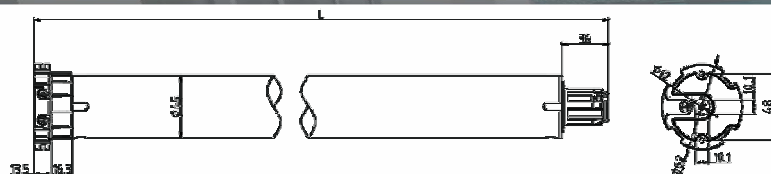
### Product Certificates





## Standard Type Motor

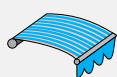
45mm diameter



**7 YEAR  
WARRANTY**

**QUALITY ASSURED**

For



Awning



Roller Blind



Roller Shutter

### Product Certificates



### Specifications - 240V / 50Hz

Type	30/17	50/13
Rated Torque (N.m)	30	50
Output Speed (rpm)	17	13
Nominal Consumption (W)	226	244
Nominal Voltage (V)	240	240
Nominal Current (A)	0.95	1.06
Running Time (Min)	4	4
Protection Index (IP)	44	44
Total Length (mm)	455	480
Maximum Turns (Turn)	40	27
Net Weight (Kg)	2.40	2.47



# WSS50S

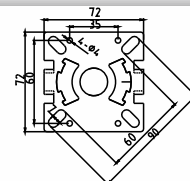
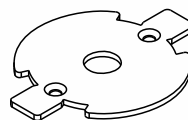
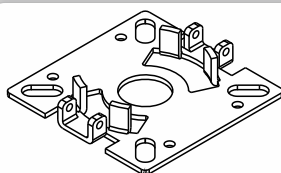
## short motor

7 year replacement warranty  
Standard type  
Mechanical switch

P 15

This is a standard mechanical limits motor like the WSS50 motors except that it is only 380mm long. This makes it suitable for many applications where the longer WSS50 won't fit, like roller shutters on very narrow bay windows for example.

To keep the size to a minimum, this motor has a different head to the standard WSS50 motors and as such requires a different mounting bracket as per the bracket image. This bracket will be supplied with the motor as standard.



### Specifications - 240V / 50Hz

Type	10/17
Rated Torque (N.m)	10
Output Speed (rpm)	17
Nominal Consumption (W)	155
Nominal Voltage (V)	230
Nominal Current (A)	0.68
Running Time (Min)	4
Protection Index (IP)	44
Total Length (mm)	380
Maximum Turns (Turn)	12
Net Weight (Kg)	1.86



**7 YEAR  
WARRANTY**

**QUALITY ASSURED**



Roller Shutter

Product Certificates



# WSME50

7 year replacement warranty  
Standard type  
Mechanical switch

\* for eyelet and crank handle options  
please see page 45



**7 YEAR  
WARRANTY**

**QUALITY ASSURED**



Roller Shutter



Awning

Product Certificates



This motor is a remote control version of a mechanical limits motor, with the addition of manual override. This feature allows a roller shutter or awning to be operated by a crank handle in the event of a power failure. This feature is to allow for emergency operation only and is not suitable for general usage.

### Specifications - 240V / 50Hz

Type	30/17	50/13
Rated Torque (N.m)	30	50
Output Speed (rpm)	17	13
Nominal Consumption (W)	226	244
Nominal Voltage (V)	230	230
Nominal Current (A)	0.95	1.06
Running Time (Min)	4	4
Protection Index (IP)	44	44
Total Length (mm)	740	740
Maximum Turns (Turn)	27	27
Net Weight (Kg)	4.1	4.3

# WSCME curtain motor

5 year replacement warranty  
Obstacle stop function  
Electro-magnetic clutch  
Hand operable during power-off

Touch control (pull to activate)  
3rd (intermediate) limit position  
Dry contact closure operation

P 16

CURTAIN MOTOR

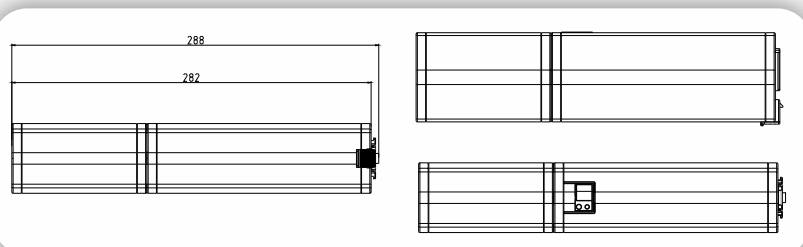
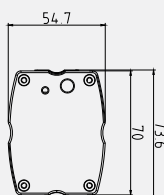
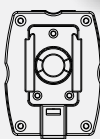


**The WSCME curtain motor can be ordered in either 240v AC or 24v DC. In both cases it's a 24v DC driven motor. And the power option simply clips on to the bottom of the motor.**

If you order the 240V AC version it comes with a detachable transformer that clips onto the motor that can be wired into normal 240V power or can be fitted with a standard plug to go into a GPO.



If you order the DC version it comes with a clip on 24V DC Lithium ion battery pack. A fully charged battery will last around 3 months on a 3m wide centre close curtain opened and closed once each day, depending on weight. Battery charger comes supplied.



## Specifications - 240V / 50Hz

Type	AC	DC
Rated Torque (N.m)	2.5	2.5
Maximum Pulling Weight (kg)	50	50
Running Speed (cm per second)	20	20
Nominal Voltage (V)	240V AC	24V DC
Nominal Current (A)	0.44	4
Running Time	∞	∞
Protection Index (IP)	20	20
Total Length (mm)	300	300
Maximum Turns	∞	∞
Net Weight (Kg)	1.3	1.3



Product Certificates



CMA7



CURTAIN TRACK  
motorised aluminium track  
6m length, white

CMA1



DRIVE BELT  
with high strength non-corrosive  
steel wire

CMA2



DRIVE UNIT/IDLE  
2 per track

CMA3



MASTER CARRIER  
1 piece for one side opening  
2 pieces for centre opening

CMA4



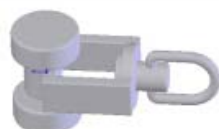
end stop with hook

CMA5



RETURN HOOK  
2 pieces per track

CMA6



RUNNER  
8 pieces required per metre



CMA7



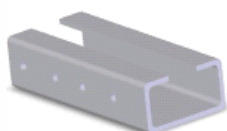
RIPPLE FOLD TAPE  
white

CMA8



RIPPLE FOLD CARRIER WITH PENDANTS  
54mm spacing

CMA9



TRACK JOINER  
connector for 2 separate tracks

CMA10



CORNER JOINER  
connector for 2 tracks at 90 degree angle

CMA11



MOUNTING CEILING BRACKETS

CMA12



WALL BRACKETS  
base only, requires an additional mounting  
bracket per bracket

CMA13



EXTENDED DOUBLE WALL BRACKET  
base only, requires an additional mounting  
bracket per bracket

## The Pioneer Series

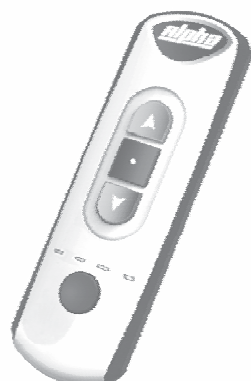
The Pioneer series remotes are a sleek, yet practical design featuring silicone edges for drop protection. Options of 1, 4, 8 & 16 channel transmitters give you enormous flexibility without being overly complicated. The WSRE103 models also feature an easy to read LCD display and a multi-channel function to further simplify the end-user experience. The Alpha remote control system applies a 66 rolling code program with 268 million possible combinations which virtually eliminates any chance of programming duplication. All Alpha remotes and receivers are inter-compatible.



## RE101

### Specifications

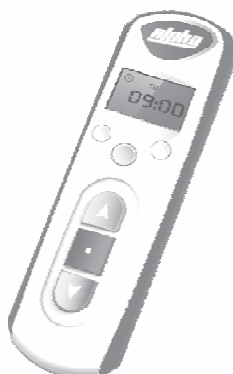
<b>Channels</b>	<b>1</b>
Frequency (MHz)	433.92
Codes	Rolling
Wall Mount	Yes



## RE102

### Specifications

<b>Channels</b>	<b>4</b>
Frequency (MHz)	433.92
Codes	Rolling
Wall Mount	Yes



With the 4, 8 & 16 channel remotes you can control 4, 8 or 16 different receivers separately or any group among the 4, 8 or 16 receivers.

## RE103

### Specifications

<b>Channels</b>	<b>4, 8 or 16</b>
Frequency (MHz)	433.92
Codes	Rolling
Wall Mount	Yes

## Keyring Remote



## RE110

### Specifications

<b>Channels</b>	<b>1</b>
Frequency (MHz)	433.92
Codes	Rolling

**The Navigator Series** The Navigator series remotes are the latest offering from the R&D team. They have delivered an elegant and simple design featuring stainless steel edge trim and a near-invisible magnetic wall mount. With all the options of the Pioneer series and almost identical operation, the Navigator series remotes are an excellent addition to our range.



## RE301

### Specifications

<b>Channels</b>	<b>1</b>
Frequency (MHz)	433.92
Codes	Rolling
Magnetic Wall Mount	Yes



## RE302

### Specifications

<b>Channels</b>	<b>5</b>
Frequency (MHz)	433.92
Codes	Rolling
Magnetic Wall Mount	Yes



## RE303

### Specifications

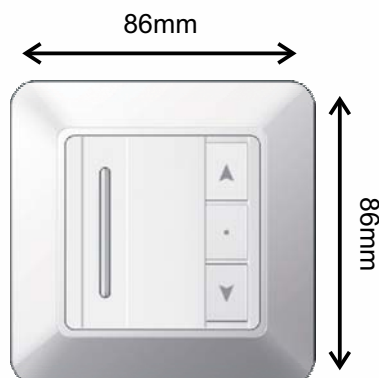
<b>Channels</b>	<b>4, 8, 16 1T, 4T</b>
Frequency (MHz)	433.92
Codes	Rolling
Magnetic Wall Mount	Yes

With the 4, 8 & 16 channel remotes you can control 4, 8 or 16 different receivers separately or any group among the 4, 8 or 16 receivers.

With the 1T & 4T channel remotes you can control 1 or 4 receivers with timer function which can set up 8 different open/close times and also Mon-Fri, or Mon-Sat, or Mon-Sun open/close times.



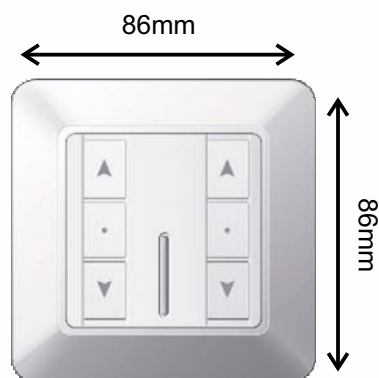
RE201



## Specifications

<b>Channels</b>	<b>1</b>
Frequency (MHz)	433.92
Codes	Rolling
Wall Mount	Yes

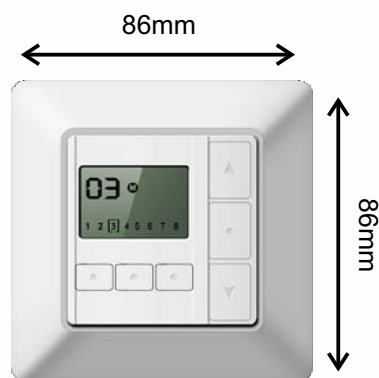
RE202



## Specifications

<b>Channels</b>	<b>2</b>
Frequency (MHz)	433.92
Codes	Rolling
Wall Mount	Yes

RE203-8C

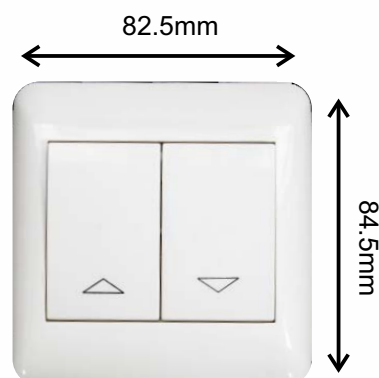


## Specifications

<b>Channels</b>	<b>8</b>
Frequency (MHz)	433.92
Codes	Rolling
Wall Mount	Yes

## Hard Wired Wall Switch

A3012

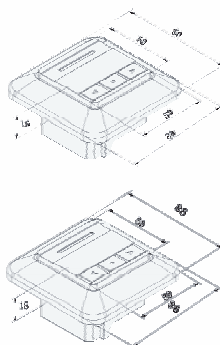


Mechanical locking paddle switch  
for WSEC & WSS Series motors

## Features:

- Superheterodyne receiving for improved frequency stability
- Each receiver channel can be controlled by 15 remotes
- The Receivers will automatic power-off after 4 minutes to protect the motor

## RC201

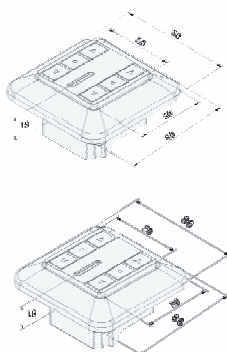


## Specifications

<b>Connect with motor</b>	<b>up to 3 units</b>
Frequency (MHz)	433.92
Codes	Rolling
Receiver Power	400W
Voltage	230V 50Hz

Able to operate with a maximum of 15 remotes

## RC202

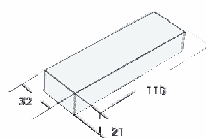


## Specifications

<b>Connect with motor</b>	<b>2 units</b>
Frequency (MHz)	433.92
Codes	Rolling
Receiver Power	600W
Voltage	230V 50Hz

Able to operate with a maximum of 15 remotes

## RC006

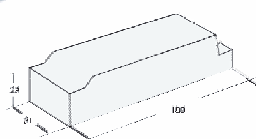


## Specifications

<b>Connect with motor</b>	<b>1 unit</b>
Frequency (MHz)	433.92
Codes	Rolling
Receiver Power	400W
Voltage	230V 50Hz

Able to operate with a maximum of 15 remotes

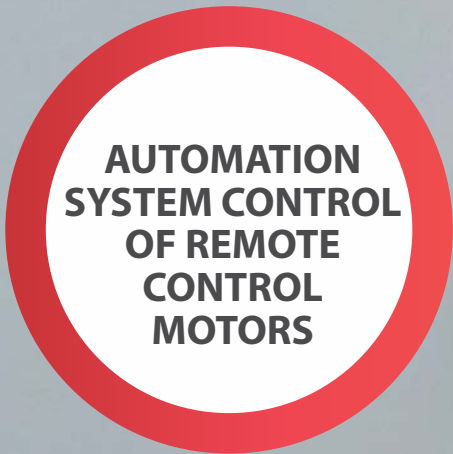
## RC008



## Specifications

<b>Connect with motor</b>	<b>1 unit</b>
Frequency (MHz)	433.92
Codes	Rolling
Receiver Power	400W
Voltage	230V 50Hz

Able to operate with a maximum of 15 remotes



This device is a single channel remote control that plugs into a power point for permanent power and is controlled by connecting the device to relays in a control system or other switches. There are 4 wires connected this item: common, up, stop and down. When the common wire comes into contact with any of the control wires, the function for that wire will be sent out to any WSER series motors or remote receivers this device is assigned to.

This device allows remote control Alpha motors to be operated by a huge variety of building management systems, automation equipment, press buttons or key turn switches as well as a remote control. This device is not practical for use in setting up the motors it will control. This must be done with a standard remote and the RE-DCE can be assigned to the motor separately for additional control options.

When planning your job with this item, only allow for connection to relays or switches that make contact as long as a button or switch is pressed and release automatically afterwards. Do not use rotary switches or switches that lock into position as the item will continue to send out the signal for as long as contact is made. This could produce unwanted results.



Product Certificates



## RE-DCE Specifications

Channels	1
Frequency (MHz)	433.92
Codes	Rolling
Wall Mount	Yes
Voltage	240V 50Hz



# RS005 Motion Sensor for folding arm awnings

P 24

CONTROL SYSTEMS



This item attaches to the front channel of a folding Arm Awning at either end. It measures the angle of the front bar and the amount of movement created by wind. When the sensitivity setting is reached, it sends a signal to the awning to close.

When used with a Folding Arm or Cassette Awning motor, it will send a pulse to the motor a few times an hour telling the motor it's there and working. If the motor stops detecting this pulse due to flat batteries or failure, it will automatically retract the awning after about half an hour to both protect the awning and to alert the owner that the motion sensor is not working. Once the pulse is restored (usually by installing new batteries) normal operation will resume.



Although this item will control a Universal motor, the Universal motor does not have the extra protective functions mentioned above if the item stops sending the pulse. The motion sensor is a more reliable method of protection than the Sun/Wind sensors as it responds to actual physical movement of the front bar and not the wind speed detected by a device mounted nearby.

This unit has 9 pre-determined sensitivity settings, but in a feature unique to Alpha, also has the capability of detecting movement created by the installer and setting the sensitivity to that level.

**Cannot be used in conjunction with Sun/Wind Sensors.**

## RS005 Specifications

Frequency (MHz)	433.92
Codes	Rolling
Protection Index	IP44
Power	2x AAA Batteries

Product Certificates



# Sun and Wind Sensors wired & wireless

P 25

- Programmable with 5 wind speed and 9 light intensity settings
- Usable as sun and wind sensor where wind overrides sun
- Sun sensor can be disabled if required
- For use with WSER Series motors

**These devices cannot  
be used in conjunction  
with Motion Sensors**

## RS001

### Specifications

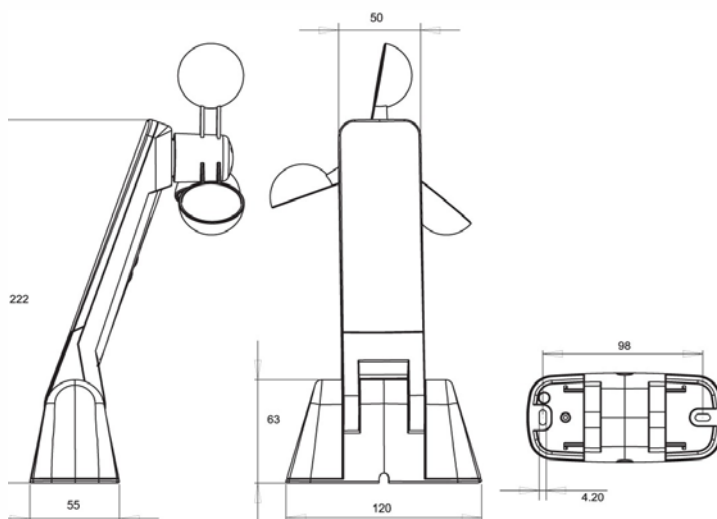
Frequency (MHz)	433.92
Codes	Rolling
Protection Index	IP44
Display	LED
Power	Solar Panel & Rechargeable Battery

## RS002

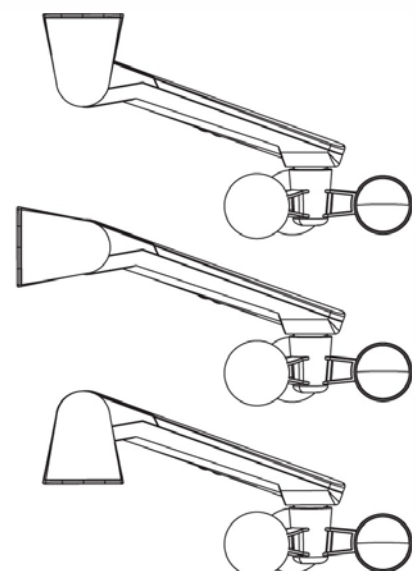
### Specifications

Frequency (MHz)	433.92
Codes	Rolling
Protection Index	IP44
Display	LED
Power	5V DC Power Supply (supplied)

### Dimension Drawing



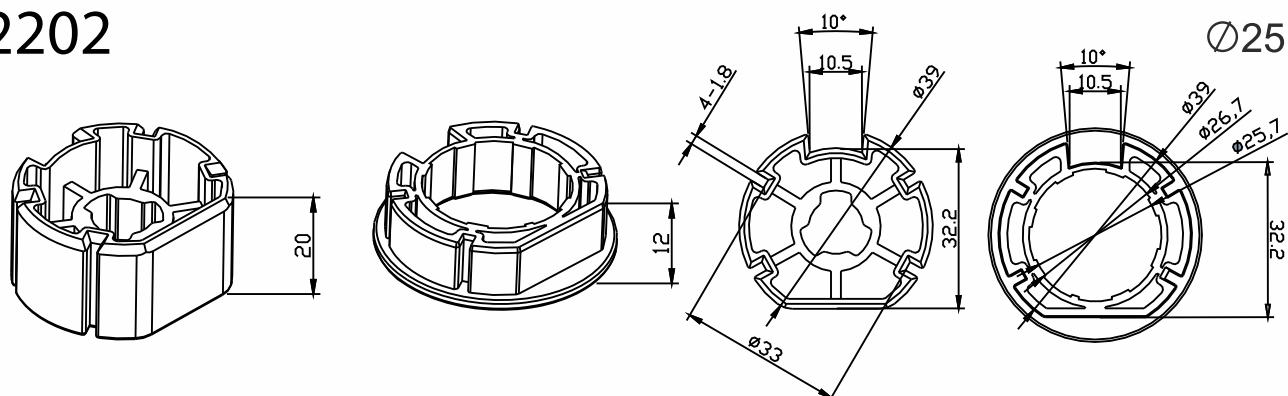
### Installation Drawing



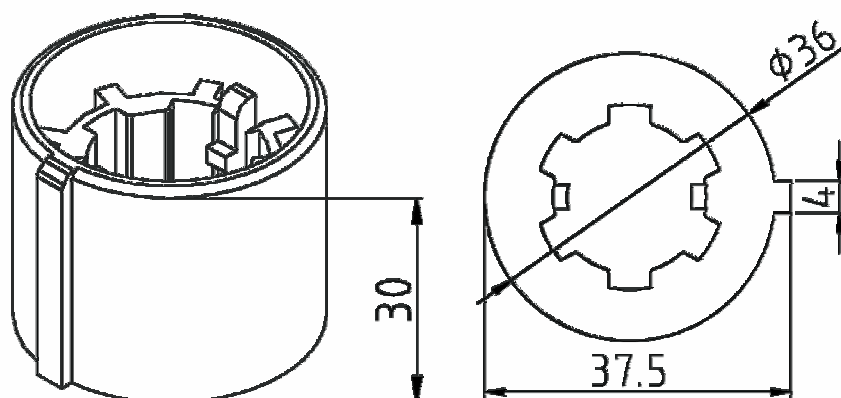




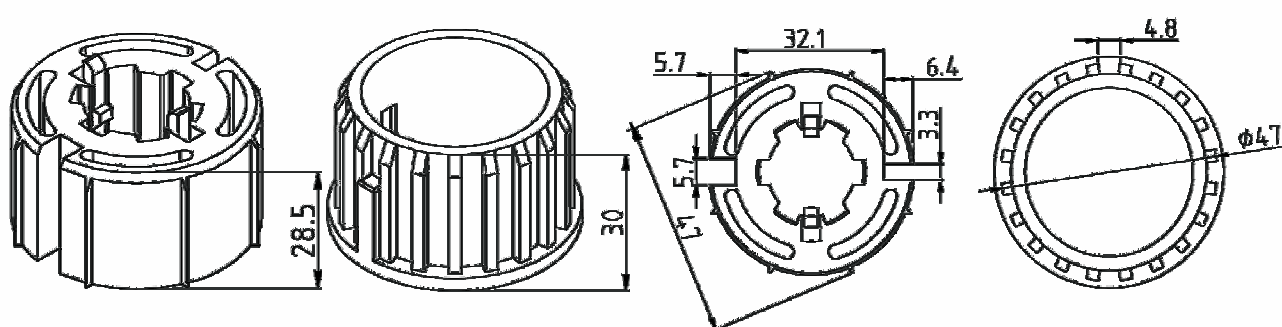
## A2202



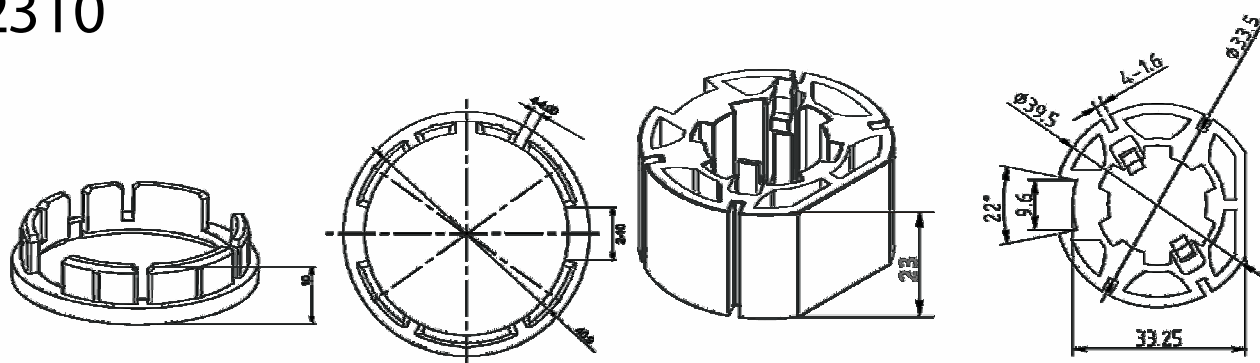
## A2305



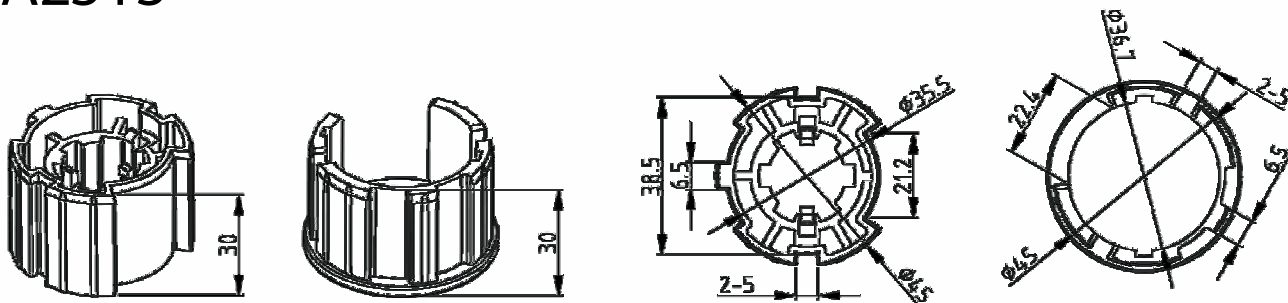
## A2307



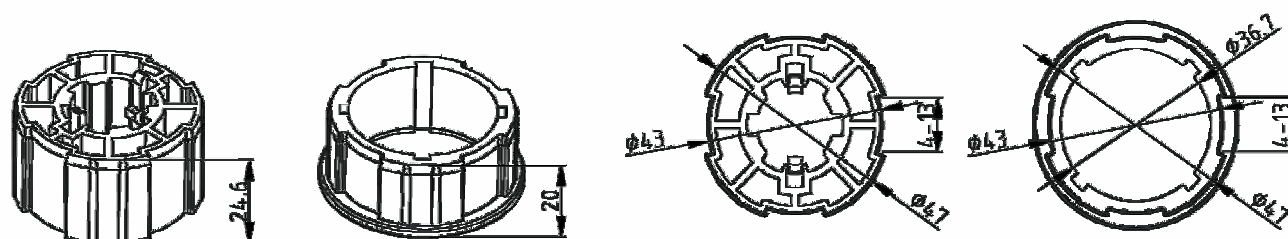
## A2310



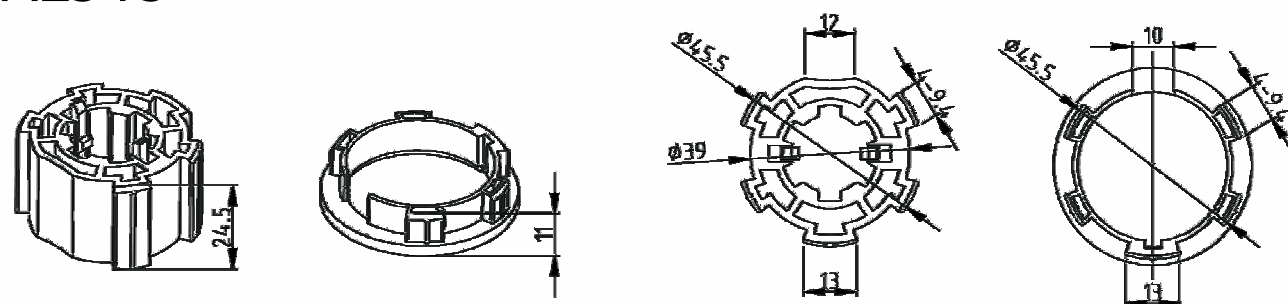
## A2313



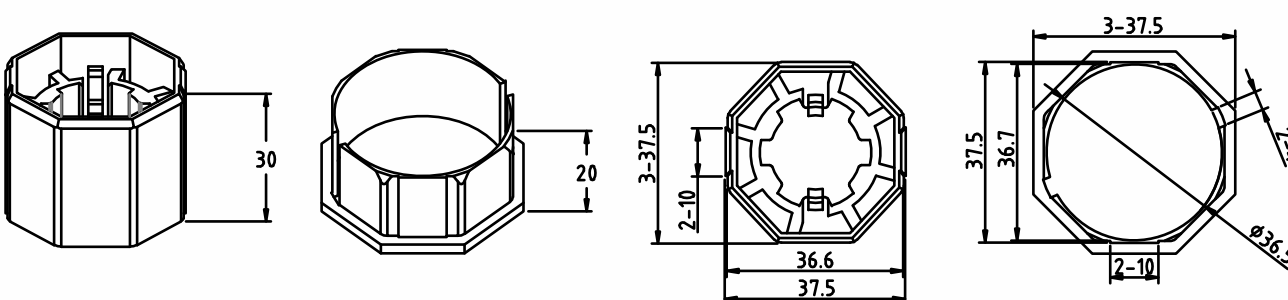
## A2314



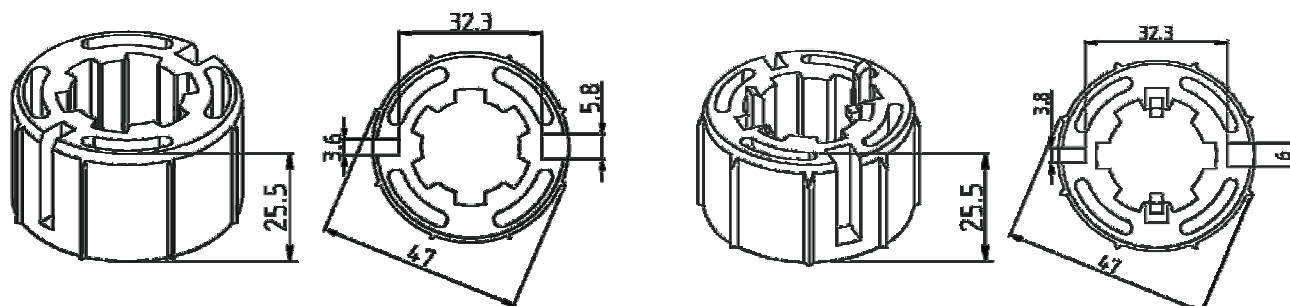
## A2315



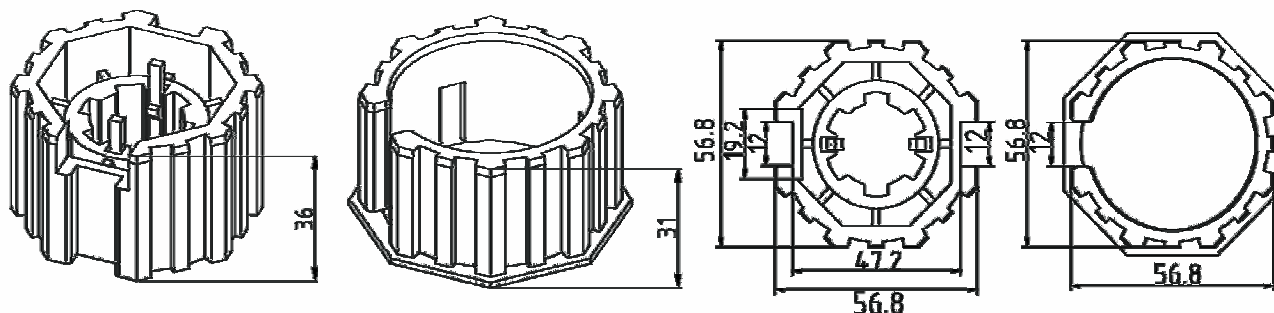
## A2320



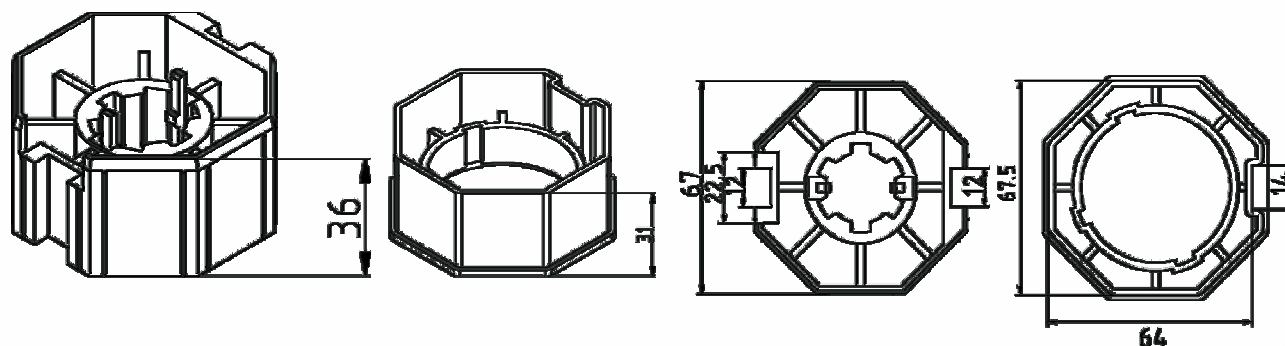
## A2401



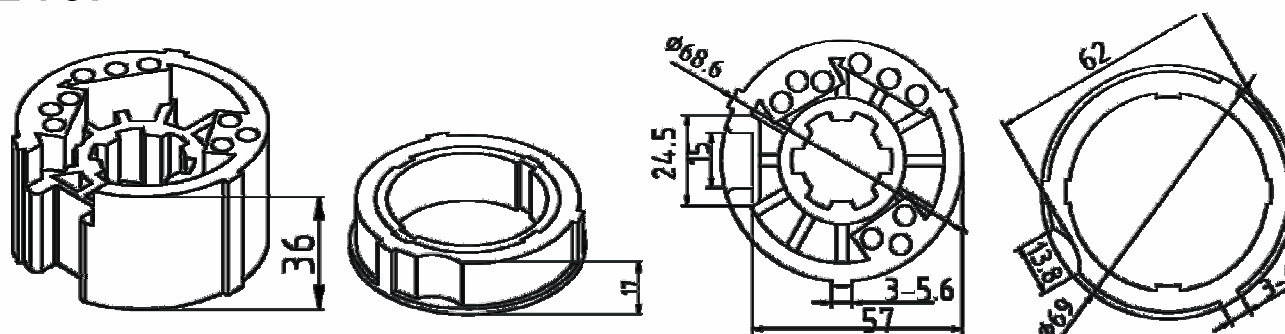
## A2404



## A2406

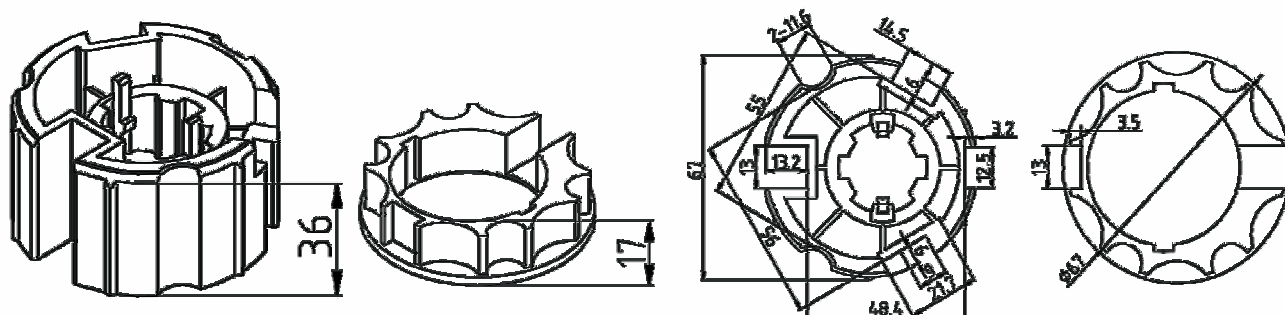


## A2407

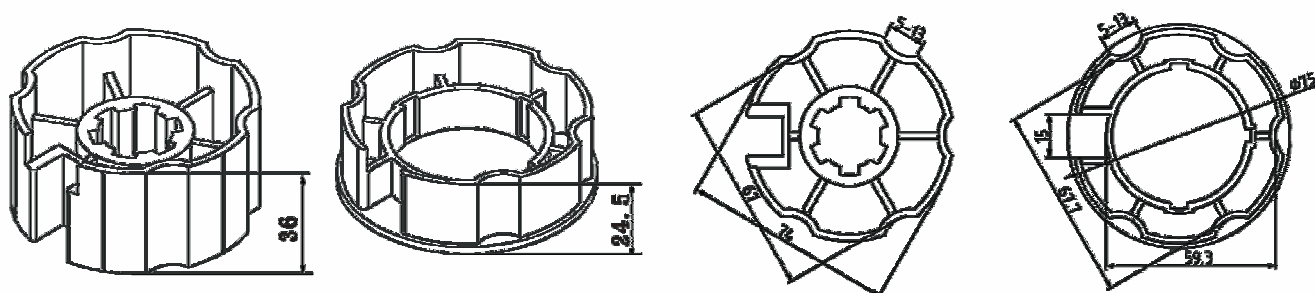




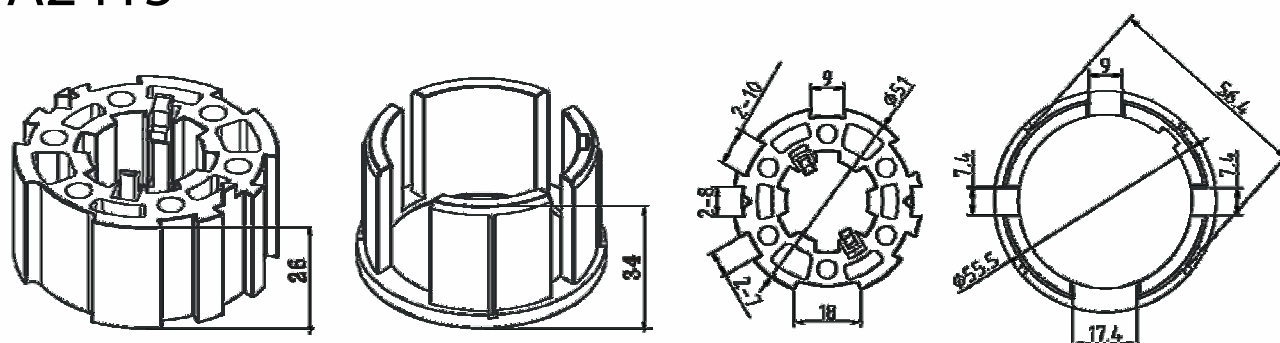
## A2408



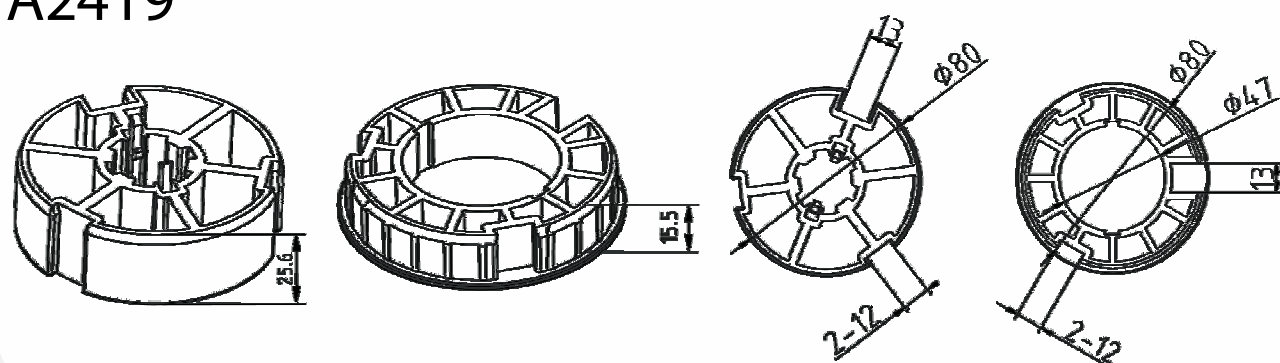
## A2409



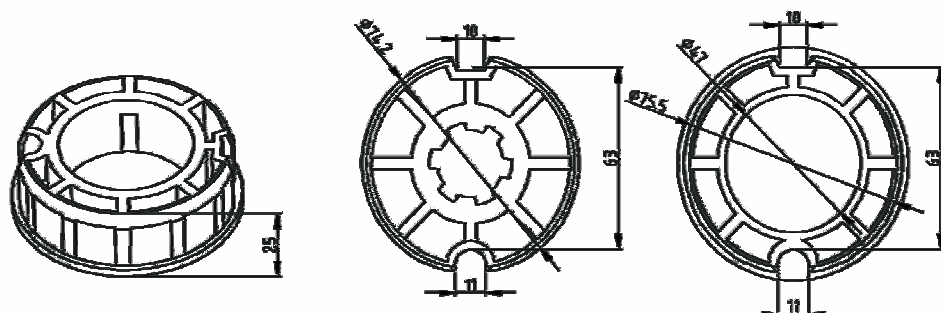
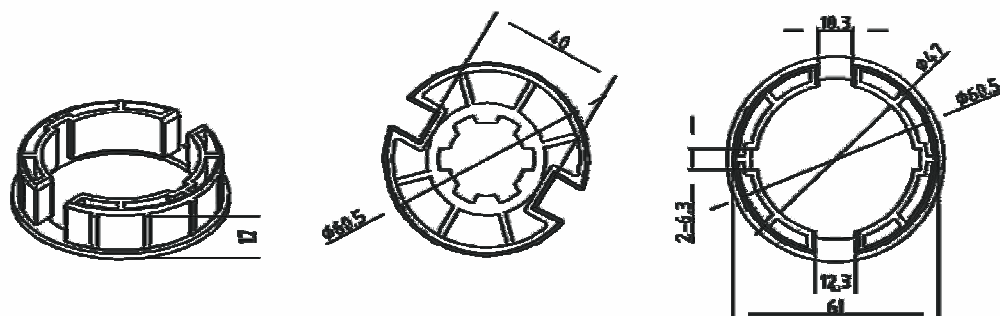
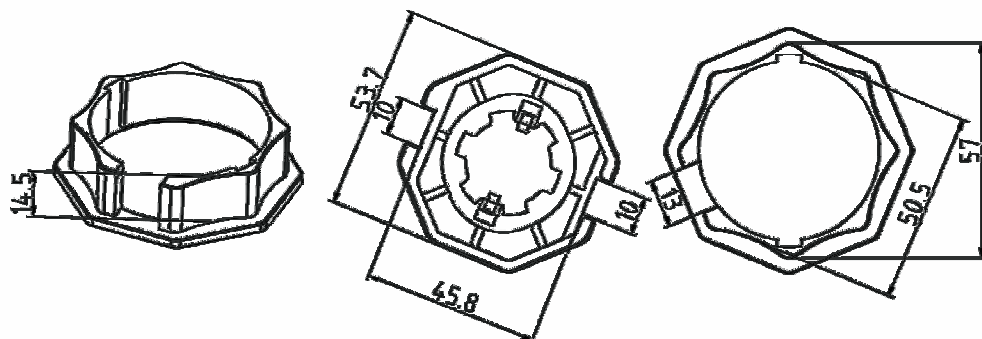
## A2415



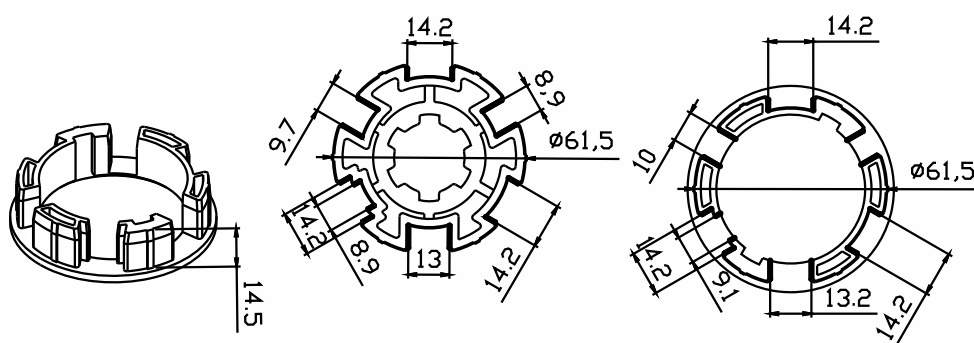
## A2419



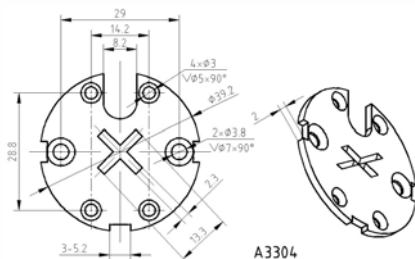
35



Technical drawing of a gear-like component. The component has a central hub and several teeth. A dimension line on the right indicates a height of 36.

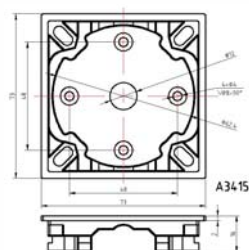


## A3304



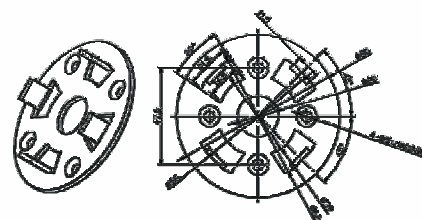
Standard on all 40mm motors

## A3415



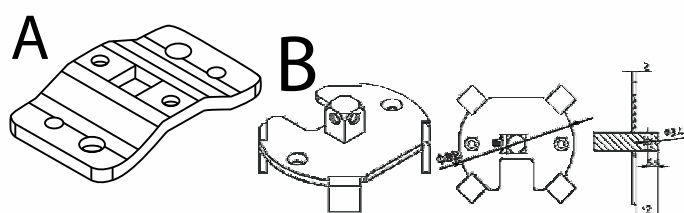
Fast Plug Adapter  
locks motor head into place

## A3405



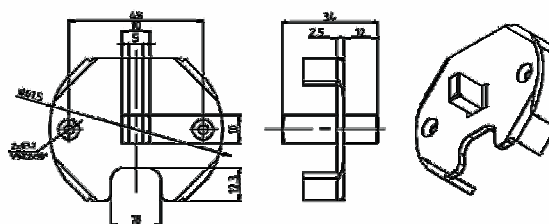
Non lockable bracket for  
50mm motors used internally

## A3005



Block and Pin style bracket

## A3409W



# Limit Setting Device

## WSB01



## Specifications

Limit setting device

To be used along with WSEC motor, easy  
to set and delete UP / DOWN limit



**This document is intended to help you choose the most appropriate motor for your application.**

**It assumes you are an industry professional and are capable of selecting the correct torque, speed and accessories.**

**Select your application below and go to the specified page for your choices**

Internal Roller Blinds (remote control) .....	P 34
Internal Roller Blinds (For Building Management System or wall switch) .....	P 35
External Drop Blinds (remote control) .....	P 36
External Drop Blinds (For Building Management System or wall switch) .....	P 37
Folding Arms Non-Cassette (remote control) .....	P 38
Folding Arms Non-Cassette (For Building Management System or wall switch) .....	P 39
Cassette Type Folding Arms (remote control) .....	P 40
Cassette Type Folding Arms (For Building Management System or wall switch) .....	P 41
Roller Shutters (remote control) .....	P 42
Roller Shutters (For Building Management System or wall switch) .....	P 43
Accessories (general guide to assist selection) .....	P 44
Limit Setting Device .....	P 45
Manual Override Motor Accessories .....	P 45
Motor Lifting Capacity Chart .....	P 46

## Remote Control Motors

**WSER40 5/28 Universal** (40mm, 5Nm, 28RPM) Perfect for all but the very largest (triple interlinked) internal blinds. Recommended for skin and bar weight up to 12kg on 43mm tube. Supplied ready to slide into Acmeda 43 – 49mm tube and also Blindware 45mm tube. Other crowns and drives to suit different tube are available on request for a small charge. (see pages 44 and 45)

**WSER40 10/14 Universal** (40mm, 10Nm 14RPM) Twice the power and half the speed of the one above. Recommended for skin and bar weight up to 20kg on 50mm tube. Supplied ready to slide into Acmeda 43 – 49mm tube and also Blindware 45mm tube. Other crowns and drives to suit different tube are available on request for a small charge. (see pages 44 and 45)

**WSER50 10/27 Universal** (50mm, 10Nm, 27RPM) Only used internally for very large blinds, usually with a very long drop (over 3 meters). Recommended for skin and bar weight up to 17kg on 63mm tube. Supplied ready to slide into 63mm Galvanised tube or Ziptrak 62mm tube. The smallest possible tubing for this motor is 50mm keyless. Supplied with an A3415 fastplug adaptor designed for external head-boxes. The recommended internal blind adaptor is the A3405-2 as it is more attractive. This and different crown and drives for different tubing are available for a small charge. (see pages 44 and 45)

## For Building Management Systems (C-Bus, Dynalite etc) or Wall Switches

These motors are NOT remote control and require a WSB01 limit setting tool to electronically set the limits. Control is via a building management system or by wall switches which are available separately. These motors may be parallel wired if desired. They are controlled by switching power between two active wires, one for up and one for down.

**WSEC40 5/28** (40mm, 5Nm, 28RPM) Perfect for all but the very largest (triple interlinked) internal blinds. Recommended for skin and bar weight up to 12kg on 43mm tube. Supplied ready to slide into Acmeda 43 – 49mm tube and also Blindware 45mm tube. Other crowns and drives to suit different tube are available on request for a small charge. (see pages 44 and 45)

**WSEC50 30/17 Universal** (50mm, 30Nm, 17RPM). Only used internally for very large blinds, usually with a very long drop (over 3 metres). Recommended for skin and bar weight up to 50kg on 63mm tube. Supplied ready to slide into Octagonal shutter tube and with A3415 fast plug end plate for head boxes. Different end plates and crown and drives for different tubing will be required for internal blind use and are available for a small charge. (see pages 44 and 45)



## Drop Awnings, Ziptrak, Slidetrack, Café Blinds and similar products

### Remote Control Motors

#### **WSER50 10/27 Universal** (50mm, 10Nm, 27RPM)

Our biggest seller for all the listed external blind types above up to 17kg (bar and skin) on 63mm tube. Supplied ready to slide into 63mm Galvanised tube or Ziptrak 62mm tube. Supplied with an A3415 fastplug adaptor designed for external head-boxes. This motor is fast, quiet, and perfect for when you want to be able to lock in and tension the blind. Different crown and drives for different size tubing and a choice of end plates are available for a small charge. (see pages 44 and 45)

#### **WSER50 30/17 Universal** (50mm, 30Nm, 17RPM)

This motor is a slower but stronger version of the motor listed above including the tensioning features. Able to lift up to 50kg (bar and skin) on a 63mm tube, it can easily deal with the largest of drop blinds and is also worth considering for non-cassette folding arm awnings if you want to be able to set your own inner limit position. Comes supplied with A3415 fast plug adaptor for head-boxes and 63mm octagonal crown and drive for shutter tube which will need to be changed for a small cost if used with different tube. (see pages 44 and 45)

## Drop Awnings, Ziptrak, Slidetrack, Café Blinds and similar products

### For Building Management Systems (C-Bus, Dynalite etc) or Wall Switches

These motors are NOT remote control and require a WSB01 limit setting tool to electronically set the limits. Control is via a building management system or by wall switches which are available separately. These motors may be parallel wired if desired. They are controlled by switching power between two active wires, one for up and one for down.

**WSEC50 30/17 Universal** (50mm, 30Nm, 17RPM). Recommended for skin and bar weight up to 50kg on 63mm tube. Supplied ready to slide into Octagonal shutter tube and with A3415 fast plug adaptor for head boxes. Different end plates and crown and drives for different tubing may be required for external blind use and are available for a small charge. (see pages 44 and 45)

**WSEC50 50/13 Universal** (50mm, 50Nm, 13RPM)

Same as above but with more power and a little slower.

## Non-Cassette type

### Remote Control Motors

**WSER50 30/17 Universal** (50mm, 30Nm, 17RPM)

**WSER50 50/13 Universal** (50mm, 50Nm, 13RPM)

This motor is worth considering for non-cassette folding arm awnings if you want to be able to set your own inner limit position so that the bar is not pressed against the fabric when it stops. Comes supplied with A3415 fast plug adaptor for head-boxes and 63mm octagonal crown and drive for shutter tube which will need to be changed for a small cost if used with different tube. An A3005 block and pin style bracket is available if you wish to use it at a small extra cost (see pages 44 and 45). Note: This motor will not automatically close if signal from sun/wind sensor is lost but can be controlled by one.

**WSER50 30/17 Cassette Awning** (50mm, 30Nm, 17RPM)

This motor is specifically designed for cassette mechanisms and sets its own inner limit by torque sensing. After the first time it closes, it drops the amount of pressure required to stop at that position. If using this motor, be aware that the bar will be pulled into the roll and may crease the fabric over time. This motor will tension the material when it reaches the outer limit. This motor comes with a A3415 fast plug adaptor but an A3005 block and pin style bracket is available if you wish to use it at a small extra cost. Order your crown and drives to suit your tube at a small extra cost (see pages 44 and 45). The amount of torque required to close properly is easily adjustable if necessary. If you wish to set your own inner limit, please use the WSER50 30/17 Universal motor listed above.

**WSER50 50/13 Cassette Awning** (50mm, 50Nm, 13RPM)

Same as “WSER50 30/17 Awning” above but more powerful and a little slower.

## Non-Cassette type

### For Building Management Systems (C-Bus, Dynalite etc) or Wall Switches

These motors are NOT remote control and require a WSB01 limit setting tool to electronically set the limits. Control is via a building management system or by wall switches which are available separately. These motors may be parallel wired if desired. They are controlled by switching power between two active wires, one for up and one for down.

#### **WSEC50 30/17 Universal** (50mm, 30Nm, 17RPM)

This motor is worth considering for non-cassette folding arm awnings if you want to be able to set your own inner limit position so that the bar is not pressed against the fabric when it stops. Supplied ready to slide into 63mm octagonal tube and with A3415 fast plug end plate for head boxes. An A3005 block and pin style adaptor is available if you wish to use it at a small extra cost. Order your crown and drives to suit your tube at a small extra cost. (see pages 44 and 45)

#### **WSEC50 50/13 Universal** (50mm, 50Nm, 13RPM)

Same as above but with more power and a little slower.

#### **WSEC50 30/17 Cassette Awning** (50mm, 30Nm, 17RPM)

This motor is specifically designed for cassette mechanisms and sets its own inner limits by torque sensing. After the first time it closes, it drops the amount of pressure required to stop at that position. If using this motor on a non-cassette folding arm, be aware that the end bar will be pulled into the roll and may crease the fabric over time. This motor will tension the material when it reaches the outer limit. This motor comes with a A3415 fast plug adaptor but an A3005 block and pin style bracket is available if you wish to use it at a small extra cost. Order your crown and drives to suit your tube at a small extra cost. (see pages 44 and 45)



Cassette style

## Remote Control Motors

### **WSER50 30/17 Cassette Awning** (50mm, 30Nm, 17RPM)

This motor is specifically designed for cassette mechanisms and sets its own inner limit by torque sensing. After the first time it closes, it drops the amount of pressure required to stop at that position, however the amount of torque required to close the cassette properly is easily adjustable from the remote if necessary. This motor will also tension the material when it reaches the outer limit. This motor comes with a A3415 fast plug adaptor but an A3005 block and pin style adaptor is available if you wish to use it at a small extra cost. Order your crown and drives to suit your tube at a small extra cost. (see pages 44 and 45)

### **WSER50 50/13 Cassette Awning** (50mm, 50Nm, 13RPM)

Same as above but with more power and a little slower.

## Cassette style

### For Building Management Systems (C-Bus, Dynalite etc) or Wall Switches

These motors are NOT remote control and require a WSB01 limit setting tool to electronically set the limits. Control is via a building management system or by wall switches which are available separately. These motors may be parallel wired if desired. They are controlled by switching power between two active wires, one for up and one for down.

#### **WSEC50 30/17 Cassette Awning** (50mm, 30Nm, 17RPM)

These motors are specifically designed for cassette mechanisms and set their own inner limits by torque sensing. After the first time it closes, it drops the amount of pressure required to stop at that position. This motor comes with a A3415 fast plug adaptor but an A3005 block and pin style adaptor is available if you wish to use it at a small extra cost. Order your crown and drives to suit your tube at a small extra cost. (see pages 44 and 45)

These motors are specifically designed for cassette mechanisms and set their own inner limits by torque sensing. After the first time it closes, it drops the amount of pressure required to stop at that position. This motor comes with a A3415 fast plug adaptor but an A3005 block and pin style adaptor is available if you wish to use it at a small extra cost. Order your crown and drives to suit your tube at a small extra cost. (see pages 44 and 45)

## Remote Control Motors

### **WSER50 30/17 Universal** (50mm, 30Nm, 17RPM)

Comes supplied with A3415 fast plug adaptor for head-boxes and 63mm octagonal crown and drive for shutter tube which will need to be changed for a small cost if used with different tube. (see pages 44 and 45)

### **WSER50 50/13 Universal** (50mm, 50Nm, 13RPM)

Same as above but with more power and a little slower.

#### **Note on Obstacle Detection:**

Alpha Tubular Motors, like many other brands, thought obstacle detection was a good feature to have and introduced it into our shutter motors initially. Unfortunately differences in shutter materials and installation methods, as well as the size and geographic location of the shutters can all affect the reliability of this feature. Therefore, we have discontinued this feature in order to guarantee solid reliable performance and the motors that were once called “Shutter Motors” have now been renamed “Universal Motors” as they are now suitable for a wide variety of tasks.

## For Building Management Systems (C-Bus, Dynalite etc) or Wall Switches

These motors are NOT remote control and WSEC series motors require a WSB01 limit setting tool to electronically set the limits. Control is via a building management system or by wall switches which are available separately. WSEC series motors may be parallel wired if desired, WSS series require a relay device to parallel wire them. They are controlled by switching power between two active wires, one for up and one for down.

### **WSEC50 30/17 Universal** (50mm, 30Nm, 17RPM)

Comes supplied with A3415 fast plug adaptor for head-boxes and 63mm octagonal crown and drive for shutter tube, which will need to be changed for a small cost if used with different tube. (see pages 44 and 45)

### **WSEC50 50/13 Universal** (50mm, 50Nm, 13RPM)

Same as above but with more power and a little slower.

### **WSS50 30/17** (50mm, 30Nm, 17RPM)

### **WSS50 50/13** (50mm, 50Nm, 13RPM)

These motors are a basic featureless mechanical limits motor that's still widely used in the Roller Shutter industry as an inexpensive reliable workhorse. A small plastic tool about the size of a screwdriver is used to manually set the limits on the head end of these motors. Comes supplied with A3415 fast plug adaptor for head-boxes and 63mm octagonal crown and drive for shutter tube, which will need to be changed for a small cost if used with different tube. (see pages 44 and 45)





## General Guide to assist your selection

### 50mm Motor Adaptors



**A3415 Fast Plug Adaptor**  
(locks motor in place)



**A3005 Block and Pin Adaptor**  
(motor secured with pin)



**A3405-2 Adaptor**  
(motor unsecured)

### Crown and Drive for 40mm Motors

Tube Type	Part to order	Fits Motor Size
40mm Octagonal for Romans	WSA2320	for 40mm motor (35mm)
Jai 45mm + Mytec 42mm + BbB 45mm	WSA2305	for 40mm motor (35mm)
43 – 49mm Acmeda + Blindware 45mm	WSA2310	for 40mm motor (35mm)
48mm Uniline Platinum tube	WSA2313	for 40mm motor (35mm)
50mm Blindware tube	WSA2314	for 40mm motor (35mm)
49mm Hollands	WSA2315	for 40mm motor (35mm)
50mm straight gauge shutter tube	WSA2301	for 40mm motor (35mm)
51mm Blindware	WSA2307	for 40mm motor (35mm)

### Crown and Drive for 50mm Motors

Tube Type	Part to order	Fits Motor Size
50mm straight gauge shutter tube	WSA2401	for 50mm motor (45mm)
60mm straight gauge	WSA2423	for 50mm motor (45mm)
60mm Acmeda + Zipscreen tube	WSA2415	for 50mm motor (45mm)
63mm Octagonal shutter tube	WSA2404	for 50mm motor (45mm)
63mm Gal + 62mm Ziptrak	WSA2424	for 50mm motor (45mm)
63mm Rollease & Slidetrack	WSA2436	for 50mm motor (45mm)
70mm Uniline Gal (eccentric)	WSA2408	for 50mm motor (45mm)
78mm Uniline Gal + Ziptrak 80mm	WSA2409	for 50mm motor (45mm)
85mm, requires minor filing for Uniline Gal	WSA2419	for 50mm motor (45mm)

## WSB01 Limit setting device

This item is required for setting the limits of any of the WSEC series motors prior to being connected to permanent power.



## Manual Override Motor Accessories

### A3018 Crank Handle



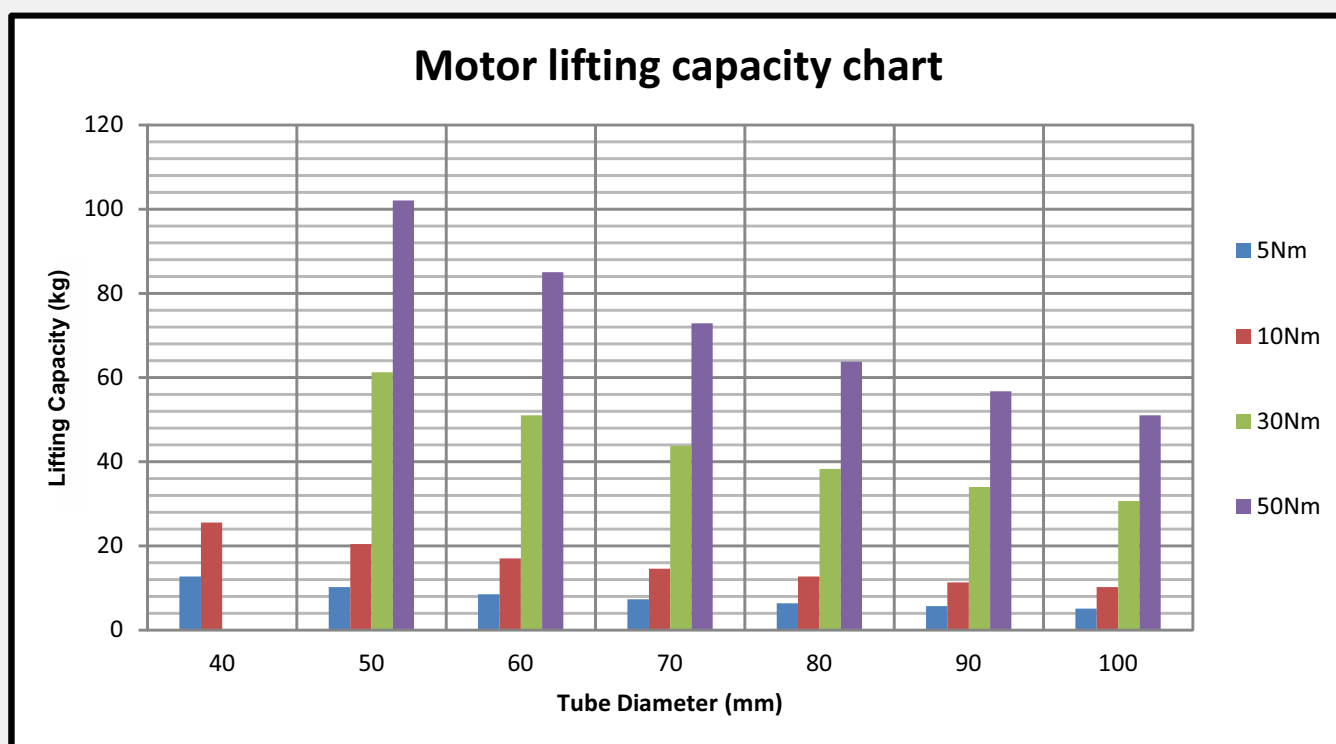
This item is for the WSME50 motor and is 1.2 metres in length

### A3047 Eyelet



Optional 300mm length  
(motor comes supplied with 100mm version)

## Motor Lifting Capacity Chart



To use this chart, simply find your tube size at the bottom of the chart, find the colour that matches the capacity of your motor and check against the weights on the left side.